

# PRODUCT RANGE





# POSITIONING MATTERS

At Positioning Products, we believe that everyone deserves to feel good in their body, live a healthy life, and enjoy comfort. Therefore, by paying attention to the details and listening to our clients and users, we design durable, high-quality, good-looking belts and harnesses that improve the health of wheelchair users.





# TABLE OF CONTENTS

+ KINETIC BALANCE POSITIONING PRODUCTS	4
+ CHARACTERISTICS	5
+ HIP POSITIONING	6
Buckles and Adjustments .....	7
Hip Belts .....	8
How to measure .....	8
2-point hip belts .....	8
4-point hip belts .....	10
Pelvic Belts .....	12
How to measure .....	12
T-shape belts .....	13
+ CHEST POSITIONING	14
Chest Harnesses .....	14
How to measure .....	14
Stretch .....	15
Non-stretch .....	15
Chest Belts .....	16
How to measure .....	16
Chest belt X .....	17
Chest belt V1 .....	17
+ LOWER LIMBS POSITIONING	18
Ankle Positioning .....	18
How to measure .....	18
+ ABDUCTION POSITIONING	20
How to measure .....	20
+ ASSORTED POSITIONING	22
How to measure .....	22
Shower Belt .....	23
Multi Purpose Belt .....	23
+ SPARE PARTS	24
+ OVERVIEW & ARTICLE NUMBERS	26
+ PRODUCT PRESENTATION	30
+ ISO 9001:2015	31



# EMPOWERING LIFES

At Positioning Products, we are committed to enhancing the lives of wheelchair users through thoughtfully designed positioning solutions.

Our products are developed to support a healthy, functional seating posture by providing anterior postural support. A good posture helps conserve energy throughout the day and contributes to overall wellbeing.

We believe belts, harnesses and other positioning products are essential components of a seating system. Rather than using energy to maintain posture, users should be able to focus on their daily activities. Our positioning products help accommodate or correct postural deviations, promoting comfort, stability and improved quality of life.



## QUALITY MATERIALS. FUNCTIONAL DESIGNS. SAFE USE.

At Positioning Products, our belts and harnesses are built for durability, safety and ease of use. Designed with attention to every detail and a focus on aesthetic appeal. Our dedicated team understands that product quality directly impacts user safety. That's why components are carefully considered; Buckles for example are a key element in all our products, most of them are covered with a pocket to protect the user from their hard edges.

The harnesses have a grip print on their inner side to secure the product's correct position on the person's body and prevent unintentional movements. All Positioning Products are made from water and dirt repellent materials, ensuring longevity. When it comes to easy of use, it is essential to highlight that the webbings on our products have rounded edges and a trim strip, guaranteeing their seamless and precise mounting on any wheelchair.



+ WATER AND DIRT REPELLENT



+ PREMIUM QUALITY MATERIALS



+ COVERED FASTENERS



+ MATERIAL REINFORCEMENTS



+ SUPER-DURABLE STITCHING



+ GRIP PRINT



+ CLEAR SIZE INDICATION



+ CE MARKED PRODUCT



+ QUALITY CONTROL



+ TRIMSTRIP



+ ROUNDED WEBBINGS



+ CERTIFIED

# HAVING A GOOD SEATING POSTURE STARTS WITH POSITIONING THE PELVIS, WHICH IS THE BASIS OF SEATING

Incorrect seating posture can negatively affect a person's body, and could lead to pain and poor circulation, digestion, and breathing.

The initial step to good posture is to properly fit the wheelchair to the user's needs, which requires providing support under the sitting surface. This can be achieved by matching the size of the seat, matching the correct height and width of the backrest and by matching leg-, arm- and if needed head support.

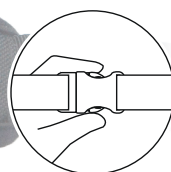
However, sometimes, the wheelchair alone cannot solve users' postural deviation. Therefore, we have designed a wide range belts and harnesses, which can further assist in positioning the user.

Our Hip Belts come with various buckles and are either single or double-adjustable. The Hip Belts tackle problems like:

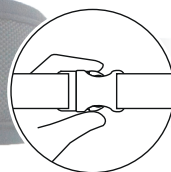
- + Posterior Pelvic Tilt
- + Anterior Pelvic Tilt
- + Pelvic Rotation
- + Pelvic Obliquity



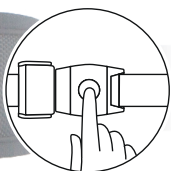




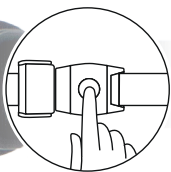
**SIDE RELEASE  
SINGLE ADJUSTABLE**



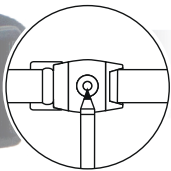
**SIDE RELEASE  
DOUBLE ADJUSTABLE**



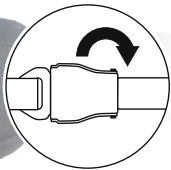
**CENTER RELEASE  
SINGLE ADJUSTABLE**



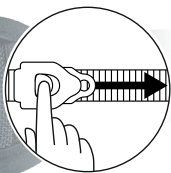
**CENTER RELEASE  
DOUBLE ADJUSTABLE**



**PIN RELEASE  
DOUBLE ADJUSTABLE**



**AVIATION RELEASE  
SINGLE ADJUSTABLE**

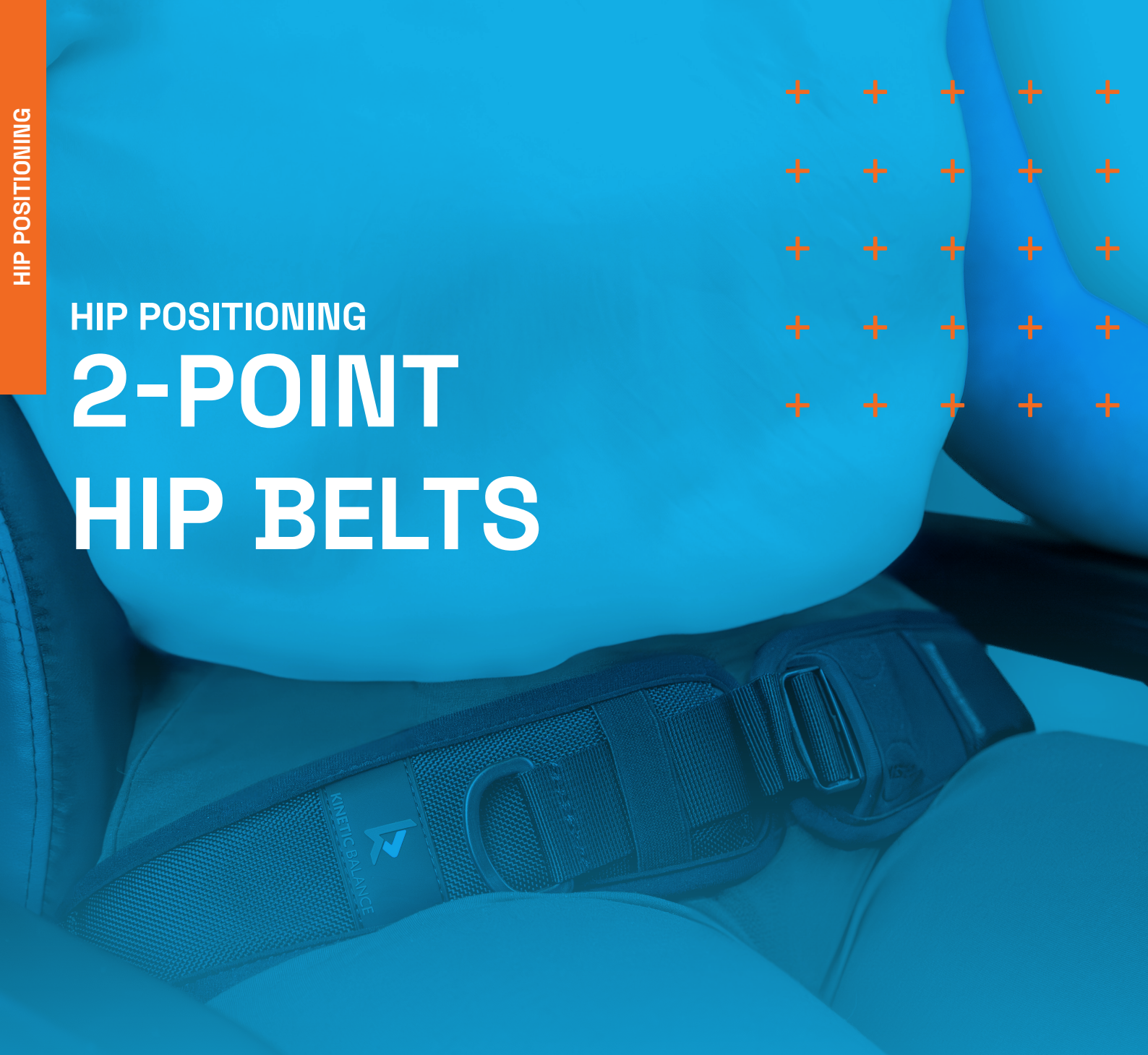


**RATCHET RELEASE  
DOUBLE ADJUSTABLE**



## HIP POSITIONING

# 2-POINT HIP BELTS



## HOW TO MEASURE

### POSTERIOR PELVIC TILT

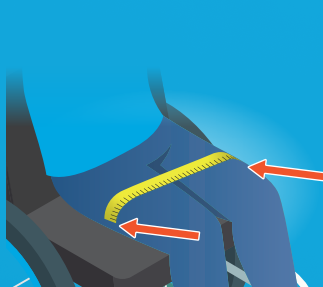
The distance from the lateral side of one thigh to the lateral side of the other thigh shall be measured with a flexible tape measure.

### ANTERIOR PELVIC TILT

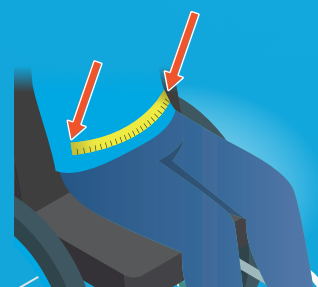
For a support managing anterior pelvic tilt, the distance from one lateral side of the pelvis horizontally level with the ASISs to the other lateral side at the same level shall be measured with a flexible tape measure.

### • SIZE CHART

Size	Length (mm)	
XXS	220 - 270	230 - 280
XS	360 - 410	310 - 360
S	360 - 410	380 - 430
M	450 - 500	450 - 510
L	570 - 620	510 - 560
XL	670 - 720	570 - 620
	6.70000.X-6.70006.X	6.70007.X



POSTERIOR PELVIC TILT



ANTERIOR PELVIC TILT



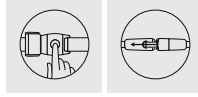
# 2-POINT HIP BELTS

## 2-POINT ESSENTIAL HIP BELT SINGLE ADJUSTABLE

**Size: M**

Article number: 6.70000.2

Made to solve Posterior Pelvic Tilt

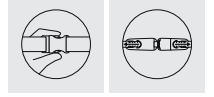


## 2-POINT HIP BELT SIDE RELEASE DOUBLE ADJUSTABLE

**Size: XS/S/M/L/XL**

Article number: 6.70001.x

Made to solve Posterior Pelvic Tilt & Pelvic Obliquity

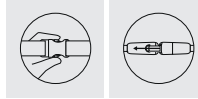


## 2-POINT HIP BELT SIDE RELEASE SINGLE ADJUSTABLE

**Size: XXS/XS/S/M/L/XL**

Article number: 6.70002.x

Made to solve Posterior Pelvic Tilt

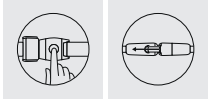


## 2-POINT HIP BELT CENTRE RELEASE SINGLE ADJUSTABLE

**Size: XS/S/M/L/XL**

Article number: 6.70003.x

Made to solve Posterior Pelvic Tilt

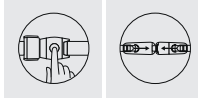


## 2-POINT HIP BELT CENTRE RELEASE DOUBLE ADJUSTABLE

**Size: XS/S/M/L/XL**

Article number: 6.70004.x

Made to solve Posterior Pelvic Tilt & Pelvic Obliquity

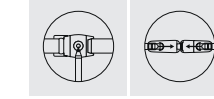


## 2-POINT HIP BELT PIN RELEASE DOUBLE ADJUSTABLE

**Size: XS/S/M/L/XL**

Article number: 6.70005.x

Made to solve Posterior Pelvic Tilt & Pelvic Obliquity

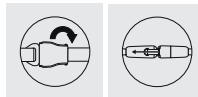


## 2-POINT HIP BELT AVIATION RELEASE SINGLE ADJUSTABLE

**Size: S/M/L/XL**

Article number: 6.70006.x

Made to solve Posterior Pelvic Tilt

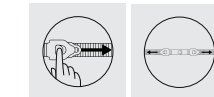


## 2-POINT HIP BELT RATCHET RELEASE SINGLE ADJUSTABLE

**Size: XXS/XS/S/M/L/XL**

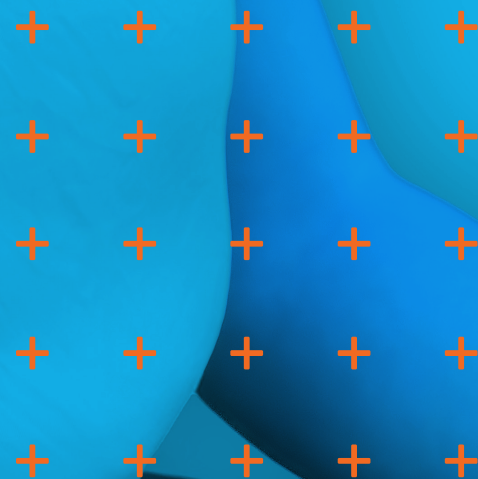
Article number: 6.70007.x

Made to solve Posterior Pelvic Tilt



## HIP POSITIONING

# 4-POINT HIP BELTS



## HOW TO MEASURE

### POSTERIOR PELVIC TILT

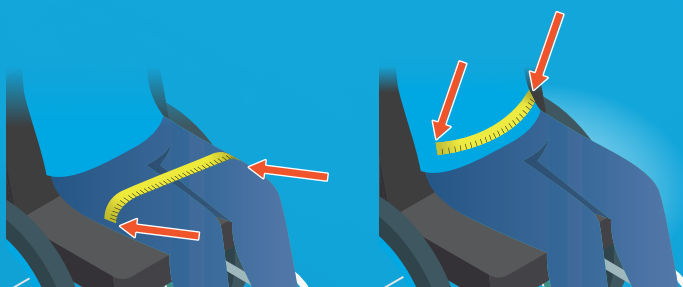
The distance from the lateral side of one thigh to the lateral side of the other thigh shall be measured with a flexible tape measure.

### ANTERIOR PELVIC TILT

For a support managing anterior pelvic tilt, the distance from one lateral side of the pelvis horizontally level with the ASISs to the other lateral side at the same level shall be measured with a flexible tape measure.

### • SIZE CHART

Size	Length (mm)
XS	360 - 410
S	360 - 410
M	450 - 500
L	570 - 620
XL	670 - 720



POSTERIOR PELVIC TILT

ANTERIOR PELVIC TILT



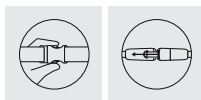
# 4-POINT HIP BELTS

## 4-POINT HIP BELT SIDE RELEASE SINGLE ADJUSTABLE

Size: XS/S/M/L/XL

Article number: 6.70042.x

Made to solve Anterior Pelvic Tilt & Pelvic Rotation

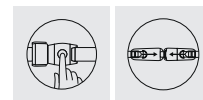


## 4-POINT HIP BELT CENTRE RELEASE DOUBLE ADJUSTABLE

Size: XS/S/M/L/XL

Article number: 6.70043.x

Made to solve Anterior Pelvic Tilt & Pelvic Rotation

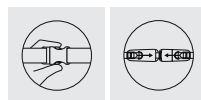


## 4-POINT HIP BELT SIDE RELEASE DOUBLE ADJUSTABLE

Size: XS/S/M/L/XL

Article number: 6.70044.x

Made to solve Anterior Pelvic Tilt & Pelvic Rotation

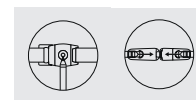


## 4-POINT HIP BELT PIN RELEASE DOUBLE ADJUSTABLE

Size: XS/S/M/L/XL

Article number: 6.70045.x

Made to solve Posterior Pelvic Rotation

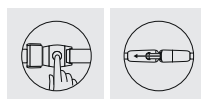


## 4-POINT HIP BELT CENTRE RELEASE SINGLE ADJUSTABLE

Size: XS/S/M/L/XL

Article number: 6.70047.x

Made to solve Anterior Pelvic Tilt & Pelvic Rotation



## HIP POSITIONING

## PELVIC BELTS



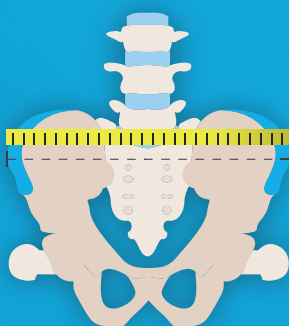
## HOW TO MEASURE

## POSTERIOR PELVIC TILT &amp; ANTERIOR PELVIC TILT

The position of the pelvis should be assessed by measuring the distance between the two Anterior Superior Iliac Spines (ASIS).

## + SIZE CHART

Size	Length (mm)
S	135 - 185
M	190 - 240
L	270 - 320
XL	370 - 420



# T-SHAPE PELVIC BELTS

## PELVIC POSITIONING NON-STRETCH

**Size: S/M/L/XL**

Article number: 7.70001.x

*Made to solve Anterior Pelvic Tilt & Pelvic Rotation*



## PELVIC POSITIONING STRETCH

**Size: S/M/L/XL**

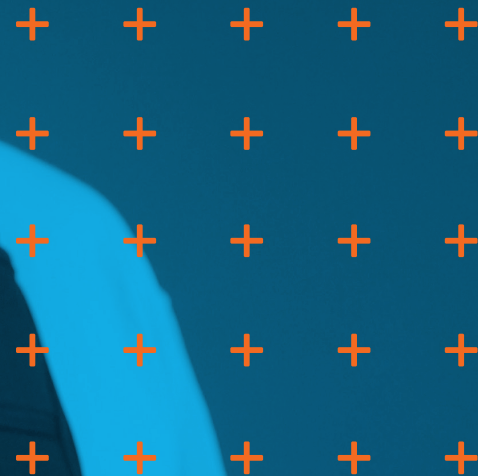
Article number: 7.70002.x

*Made to solve Anterior Pelvic Tilt & Pelvic Rotation*





# CHEST POSITIONING HARNESSES



## HOW TO MEASURE

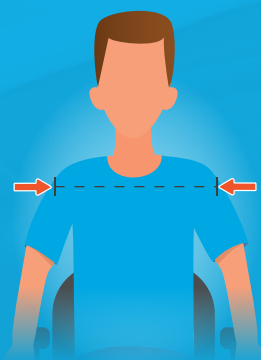
ALWAYS MUST BE USED IN COMBINATION WITH A HIP BELT

### ANTERIOR TRUNK SUPPORT

The shoulder width shall be measured as shown.

#### • SIZE CHART

Size	Length (mm)
XS	150 - 240
Junior	150 - 240
S	240 - 280
M	280 - 330
L	330 - 410
XL	410 - 480



# CHEST POSITIONING STRETCH & NON-STRETCH

## CHEST POSITIONING STRETCH

**Size:** XS/Junior/S/M/L  
Article number Junior: 5.71001.1  
Article number: 5.71012.x  
Made to solve Kyphosis & Lordosis



## X-CHEST POSITIONING STRETCH

**Size:** S/M/L  
Article number: 5.71014.x  
Made to solve Kyphosis & Lordosis



## CHEST POSITIONING ZIPPER STRETCH

**Size:** S/M  
Article number: Z5.71022.x  
Made to solve Kyphosis & Lordosis



## CHEST POSITIONING FLEXCONTROL/NON-STRETCH

**Size:** S/M/L/XL  
Article number: 5.71032.x  
Made to solve Kyphosis & Lordosis



## X-CHEST POSITIONING FLEXCONTROL/NON-STRETCH

**Size:** S/M/L  
Article number: 5.71034.x  
Made to solve Kyphosis & Lordosis



## H-CHEST POSITIONING FLEX-CONTROL/ NON-STRETCH

**Size:** S/M/L/XL  
Article number: 5.81001.x  
Made to solve Kyphosis & Lordosis





## CHEST POSITIONING

## CHEST BELTS

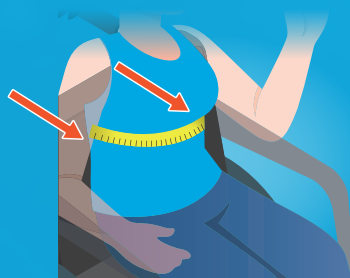


## HOW TO MEASURE

The circumferential distance shall be measured with a flexible tape, around the torso to the back support on each side.

## + SIZE CHART

Size	Length (mm)
XS	310 - 410
S	400 - 500
M	470 - 570
L	550 - 650





# CHEST BELTS

## NEOPRENE CHEST BELT X

**Size:** XS/S/M/L

Article Number: 402x

*Made to solve Lordosis*



## CHEST BELT V1

**Size:** S/L

Article Number: 400x

*Made to solve Lordosis*



LOWER LIMBS POSITIONING

# ANKLE POSITIONING



## HOW TO MEASURE

ALWAYS MUST BE USED IN COMBINATION WITH A HIP BELT

The circumference above the ankle bone shall be measured with a flexible tape measure.

The circumference shall be measured with the user wearing shoes and ankle foot orthoses (AFOs) if these are typically worn in the seating system.

### • SIZE CHART

Size	Length (mm)
XS	190 - 220
S	220 - 250
M	270 - 300
L	300 - 330





# ANKLE POSITIONING

## ANKLE POSITIONING HOOK AND LOOP CLOSURE

**Size: XS/S/M/L**

Article number: 8.70001.x

Made to solve Feet going of footrest &  
Correcting the position of the feet on  
the footrest



## ANKLE POSITIONING SIDE RELEASE

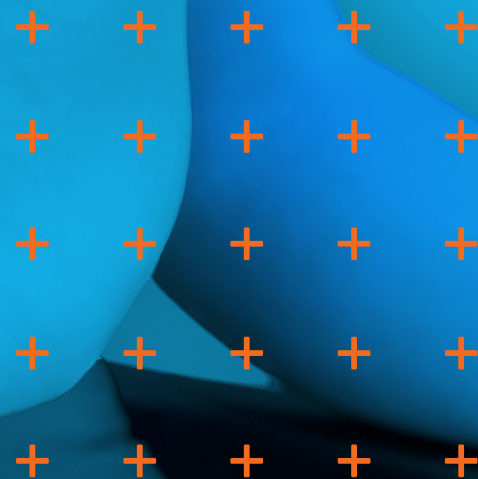
**Size: XS/S/M/L**

Article number: 8.70002.x

Made to solve Feet going of footrest &  
Correcting the position of the feet on  
the footrest



# ABDUCTION POSITIONING

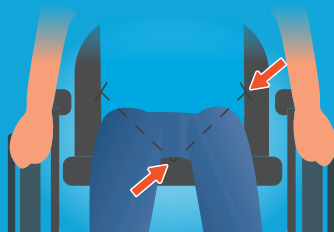


## HOW TO MEASURE

Measure from the lateral side of the thigh to the point where the inner side of the thigh touches the seat.

### • SIZE CHART

Size	Length (mm)
XS	140 - 190
S	170 - 220
M	200 - 250
L	250 - 300





# ABDUCTION POSITIONING

## ABDUCTION POSITIONING

**Size: XS/S/M/L**

Article Number: 9.70001.x

Made to solve Adduction of  
the upper legs



# ASSORTED POSITIONING

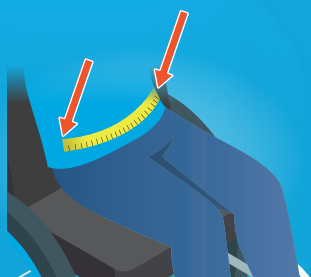


## HOW TO MEASURE

### SHOWER BELT

Measure from the top of seat to top of seat.

Size	Length (mm)
S	400 - 710
M	600 - 910
L	740 - 1070



### NEOPRENE MULTI-PURPOSE BAND\*

Measure from the fixation points on the chair frame, wrapping behind the occupant's lower legs using a flexible tape measure.

Size	Length (mm)
S	650 - 900
M	750 - 1000
L	950 - 1200



\* Depending on use



# ASSORTED POSITIONING

## SHOWER BELT

Size: S/M/L

Article number: 300x

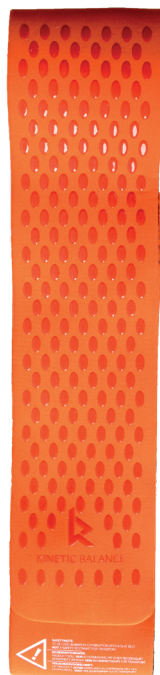
Positioning aid for in the shower



## NEOPRENE MULTI-PURPOSE BAND

Size: S/M/L

Article Number: 500x





# SPARE PARTS

## + SPARE PARTS

Article #	Article Name	
1.1001.1	10 pcs Webbing Holder 20mm	
1.1001.2	10 pcs Webbing Holder 25mm	
1.1001.3	10 pcs Webbing Holder 40mm	
1.1002.1	10 pcs Slider Buckle 20mm	
1.1002.2	10 pcs Slider Buckle 25mm	
1.1002.3	10 pcs Slider Buckle 40mm	
1.1003.2	10 pcs Metal Slider Buckle 25mm	
1.1003.3	10 pcs Metal Slider Buckle 40mm	
1.1004.2	10 pcs Metal Triangle Bracket 25mm	
1.1004.3	10 pcs Metal Triangle Bracket 40mm	
1.1005.0	10 pcs Tube Clamps	
1.1006.2	10 pcs Centre Release Plastic Cap 25 mm	
1.1006.3	10 pcs Centre Release Plastic Cap 40 mm	
1.1007.1	10 pcs D-Ring 20mm	
1.1007.2	10 pcs D-Ring 25mm	
1.1007.3	10 pcs D-Ring 40mm	



## + RATCHET BELT ITEMS

Article #	Article Name	
1.3001.1	10 pcs Ratchet Buckle - GO - 14	
1.3001.2	10 pcs Ratchet Buckle - ERGO - 19	
1.3001.3	10 pcs Ratchet Buckle - ERGO - 24	
1.3002.1	10 pcs Ratchet V-Straps - GO - 14	
1.3002.2	10 pcs Ratchet V-Straps - ERGO - 19	
1.3002.3	10 pcs Ratchet V-Straps - ERGO - 24	

## + BUCKLES

Article #	Article Name	
1.2001.1	10 pcs Side Release Buckle 20mm	
1.2001.2	10 pcs Side Release Buckle 25mm	
1.2001.3	10 pcs Side Release Buckle 40mm	
1.2002.2	10 pcs Centre Release Buckle 25mm	
1.2002.3	10 pcs Centre Release Buckle 40mm	
1.2003.2	10 pcs Centre Release Buckle 25mm with cap	
1.2003.3	10 pcs Centre Release Buckle 40mm with cap	
1.2004.2	10 pcs Pin Release Buckle 25mm	
1.2004.3	10 pcs Pin Release Buckle 40mm	
1.2005.3	10 pcs Aviation Release Buckle 40mm	
1.2006.2	10 pcs Cam buckle 25mm	
1.2006.3	10 pcs Cam Buckle 40mm	

## + SETS

Article #	Article Name	
1.4001.1	4 pcs Straps for Chest Positioning Webbing Straps 20 mm	
1.4001.2	4 pcs Straps for Chest Positioning Webbing Straps 25 mm	
1.4002.2	Ankle Positioning Mounting Kit 25mm	
1.4002.3	Ankle Positioning Mounting Kit 40mm	
1.4003.2	10 pcs Side Release Contrabelts 25mm	
1.4003.3	10 pcs Side Release Contrabelts 40mm	



Lined area for notes.

# PRODUCT OVERVIEW

## + HIP | 2-POINT

2-point Essential Hip Belt Single Adjustable		
6.70000.2	M	

2-point Hip Belt Side Release Double Adjustable		
6.70001.0	XS	
6.70001.1	S	
6.70001.2	M	
6.70001.3	L	
6.70001.4	XL	

2-point Hip Belt Side Release Single Adjustable		
6.70002.00	XXS	
6.70002.0	XS	
6.70002.1	S	
6.70002.2	M	
6.70002.3	L	
6.70002.4	XL	

2-point Hip Belt Centre Release Single Adjustable		
6.70003.0	XS	
6.70003.1	S	
6.70003.2	M	
6.70003.3	L	
6.70003.4	XL	

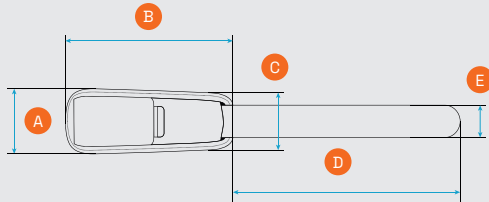
2-point Hip Belt Centre Release Double Adjustable		
6.70004.0	XS	
6.70004.1	S	
6.70004.2	M	
6.70004.3	L	
6.70004.4	XL	

2-point Hip Belt Pin Release Double Adjustable		
6.70005.0	XS	
6.70005.1	S	
6.70005.2	M	
6.70005.3	L	
6.70005.4	XL	

2-point Hip Belt Aviation Release Single Adjustable		
6.70006.1	S	
6.70006.2	M	
6.70006.3	L	
6.70006.4	XL	

2-point Hip Belt Ratchet Release Single Adjustable		
6.70007.00	XXS	
6.70007.0	XS	
6.70007.1	S	
6.70007.2	M	
6.70007.3	L	
6.70007.4	XL	

Measurements  
2-point Hip Belt



Article 6.70000 - 6.70006

	A	B	C	D	E
XXS	50	110	40	480	20
XS	60	180	45	580	25
S	70	180	55	640	38
M	80	225	60	720	38
L	85	285	65	780	38
XL	100	335	70	780	38

All measurements in mm

Article 6.70007

	A	B	C	D	E
XXS	65	110	53	500	25
XS	65	150	53	500	25
S	70	190	58	675	38
M	70	225	58	675	38
L	75	255	60	700	38
XL	80	285	60	700	38

All measurements in mm

## + HIP | 4-POINT

4-point Hip Belt Side Release Single Adjustable		
6.70042.0	XS	
6.70042.1	S	
6.70042.2	M	
6.70042.3	L	
6.70042.4	XL	

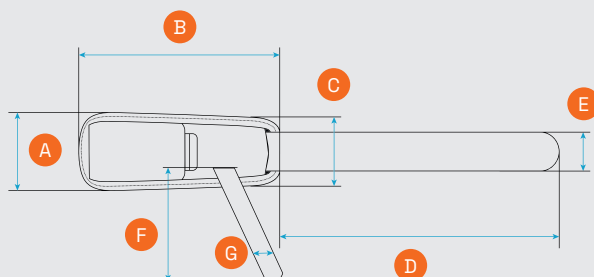
4-point Hip Belt Side Release Double Adjustable		
6.70044.0	XS	
6.70044.1	S	
6.70044.2	M	
6.70044.3	L	
6.70044.4	XL	

4-point Hip Belt Centre Release Single Adjustable		
6.70047.0	XS	
6.70047.1	S	
6.70047.2	M	
6.70047.3	L	
6.70047.4	XL	

4-point Hip Belt Centre Release Double Adjustable		
6.70043.0	XS	
6.70043.1	S	
6.70043.2	M	
6.70043.3	L	
6.70043.4	XL	

4-point Hip Belt Pin Release Double Adjustable		
6.70045.0	XS	
6.70045.1	S	
6.70045.2	M	
6.70045.3	L	
6.70045.4	XL	

Measurements  
4-point Hip Belt



	A	B	C	D	E	F	G
XS	60	180	45	580	25	500	20
S	70	180	55	640	38	500	25
M	80	225	60	720	38	600	25
L	85	285	65	780	38	700	25
XL	100	335	70	780	38	700	25

All measurements in mm



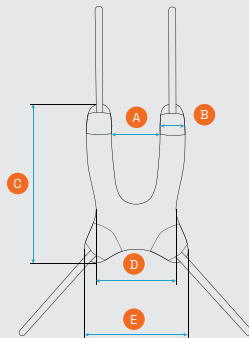
## + CHEST HARNESSES | STRETCH

Chest Positioning Stretch		
5.71012.0	XS	
5.71001.1	Junior	
5.71012.1	S	
5.71012.2	M	
5.71012.3	L	

X-Chest Positioning Stretch		
5.71014.1	S	
5.71014.2	M	
5.71014.3	L	

Chest Positioning Zipper Stretch		
Z5.71022.1	S	
Z5.71022.2	M	

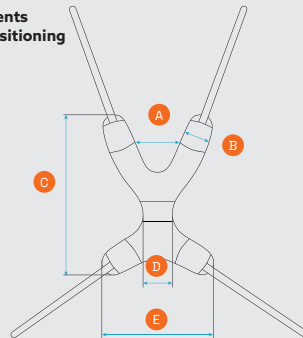
Measurements  
Chest Positioning  
Stretch



	A	B	C	D	E
XS	50	50	230	80	170
Junior	75	55	265	150	195
S	70	55	310	160	215
M	110	60	350	180	230
L	120	60	395	200	245

All measurements in mm

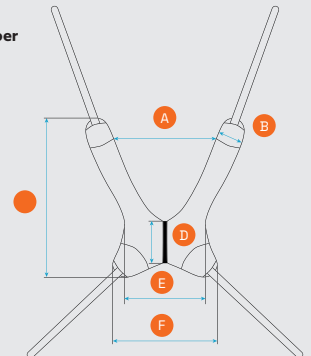
Measurements  
X-Chest Positioning  
Stretch



	A	B	C	D	E
S	80	60	310	75	230
M	90	60	360	75	250
L	120	65	410	75	285

All measurements in mm

Measurements  
Chest Positioning Zipper  
Stretch



	A	B	C	D	E	F
S	115	55	305	85	150	190
M	180	60	350	85	180	225

All measurements in mm

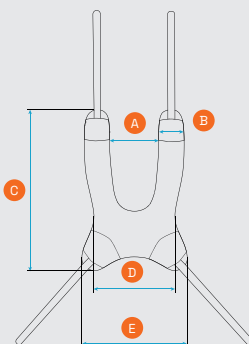
## + CHEST HARNESSES | NON-STRETCH

Chest Positioning Flex-Control/Non-Stretch		
5.71032.1	S	
5.71032.2	M	
5.71032.3	L	
5.71032.4	XL	

X-Chest Positioning Flex-Control/Non-Stretch		
5.71034.1	S	
5.71034.2	M	
5.71034.3	L	

H-Chest Positioning Flex-Control/Non-Stretch		
5.81001.1	S	
5.81001.2	M	
5.81001.3	L	
5.81001.4	XL	

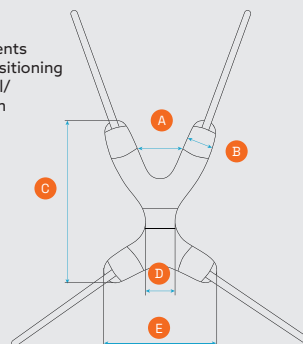
Measurements  
Chest Positioning  
Flex-control/  
Non-Stretch



	A	B	C	D	E
S	70	55	310	160	215
M	110	60	350	180	230
L	120	60	395	200	245
XL	160	60	450	235	290

All measurements in mm

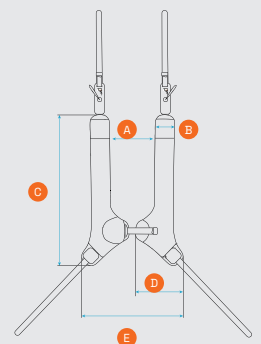
Measurements  
X-Chest Positioning  
Flex-control/  
Non-Stretch



	A	B	C	D	E
S	80	60	310	75	230
M	90	60	360	75	250
L	120	65	410	75	285

All measurements in mm

Measurements  
H-Chest Positioning  
Flex-control/  
Non-Stretch



	A	B	C	D	E
S	70	50	310	100	200
M	100	55	390	100	235
L	140	55	470	120	280
XL	150	70	530	140	310

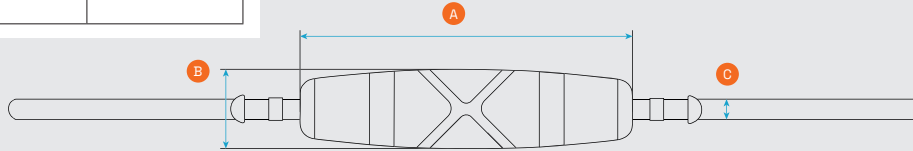
All measurements in mm

# PRODUCT OVERVIEW

## + CHEST BELTS

Neoprene Chest Belt X		
4020	XS	
4021	S	
4022	M	
4023	L	

Measurements  
Neoprene Chest Belt X

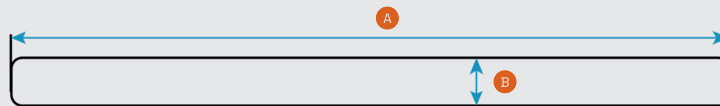


	A	B	C
XS	305	80	25
S	400	100	38
M	460	110	38
L	565	130	38

All measurements in mm

Chest Belt V1		
4001	S	
4002	L	

Measurements  
Chest Belt V1



	A	B
S	1400>1600	50
M	1700>1950	100

All measurements in mm

## + PELVIC

Pelvic Positioning Non-Stretch		
7.70001.1	S	
7.70001.2	M	
7.70001.3	L	
7.70001.4	XL	

Pelvic Positioning Stretch		
7.70002.1	S	
7.70002.2	M	
7.70002.3	L	
7.70002.4	XL	

## + ANKLE

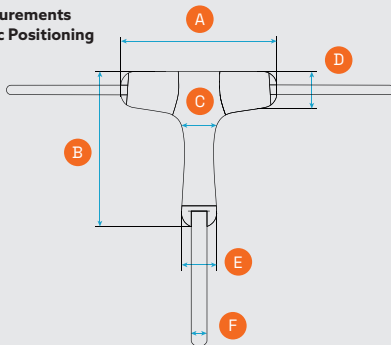
Ankle Positioning Hook and Loop Closure		
8.70001.0	XS	
8.70001.1	S	
8.70001.2	M	
8.70001.3	L	

Ankle Positioning Side Release		
8.70002.0	XS	
8.70002.1	S	
8.70002.2	M	
8.70002.3	L	

## + ABDUCTION

Abduction Positioning		
9.70001.0	XS	
9.70001.1	S	
9.70001.2	M	
9.70001.3	L	

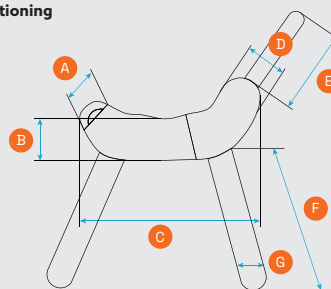
Measurements  
Pelvic Positioning



	A	B	C	D	E	F
S	185	190	155	55	50	20
M	230	230	265	65	55	25
L	310	310	370	70	65	38
XL	410	410	490	80	85	38

All measurements in mm

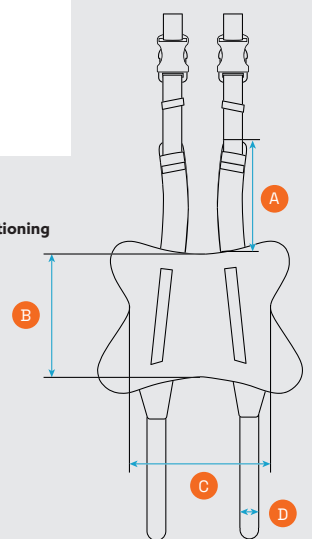
Measurements  
Ankle Positioning



	A	B	C	D	E	F	G
XS	45	50	190	55	90	270	20
S	50	60	220	65	140	280	25
M	60	65	270	65	140	350	38
L	60	65	300	65	170	365	38

All measurements in mm

Measurements  
Abduction Positioning



	A	B	C	D
XS	140	150	190	25
S	170	180	220	25
M	200	210	240	25
L	250	240	270	38

All measurements in mm



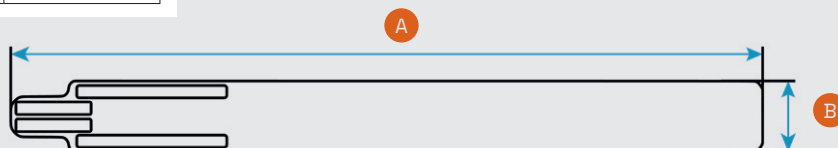
## + ASSORTED POSITIONING

Neoprene Multi-Purpose Band		
5001	S	
5002	M	
5003	L	

Measurements  
Neoprene Multi-Purpose Band

	A	B
S	1100	90
M	1300	100
L	1500	140

All measurements  
in mm

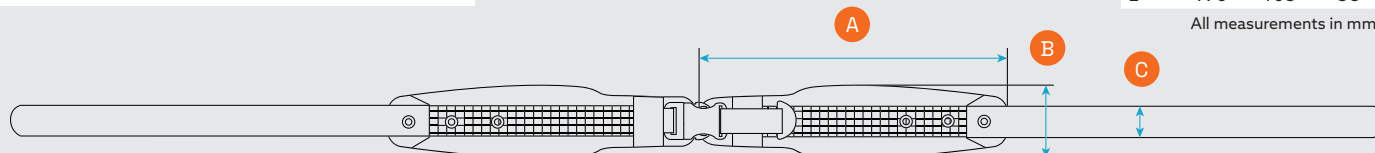


Shower Belt		
3001	S	
3002	M	
3003	L	

Measurements  
Shower Belt

	A	B	C
S	315	105	38
M	415	105	38
L	490	105	38

All measurements in mm



## INTERESTED IN OUR POSITIONING PRODUCTS?

Would you like to learn more about our positioning products and how they can improve seating posture? We'd be happy to share more information. If interested, a product specialist can visit you to demonstrate the benefits and possibilities of our products and discuss important considerations for mounting and placement.

We're look forward to exploring the possibilities together.





## DEDICATED TO DELIVERING TOP-QUALITY

ISO 9001 is the international standard that specifies requirements for a quality management system (QMS).

Organizations use the standard to demonstrate the ability to consistently provide products and services that meet customer and regulatory requirements. Our manufacturing facility is compliant with this standard. Thus, ensuring the superior quality of all our products. We promise to continue to provide you with the best positioning products available.

Photo by Gelbart Orto Team





**Positioning Products B.V.**  
Scheepmakerstraat 27  
2222 AB Katwijk aan Zee  
The Netherlands

T: +31 (0)71-2048424  
E: [mail@positioningproducts.nl](mailto:mail@positioningproducts.nl)

